



How can families support the KOT development?

At the beginning of the school year, meet with the teacher to share information about your child's previous learning experiences (for example, preschool) and any other information you feel will help the teacher to know and support your child.

At the beginning of November, meet with your child's teacher to ask what they have learned about your child's learning and development through the KOT.

If you have further questions about the KOT, please contact your child's teacher.

KOT website:

http://ped.state.nm.us/ped/LiteracyEarlyChildhoodEd_KOT_index.html



**NEW MEXICO
Kindergarten
Observation Tool**

NM PED
Public Education Department

WestEd 

Your child has learned many things before entering into a kindergarten classroom!

In order to ensure the best support for each child, kindergarten teachers need information about what your child knows and can do upon entering the classroom.



What is the Kindergarten Assessment Tool (KOT)?

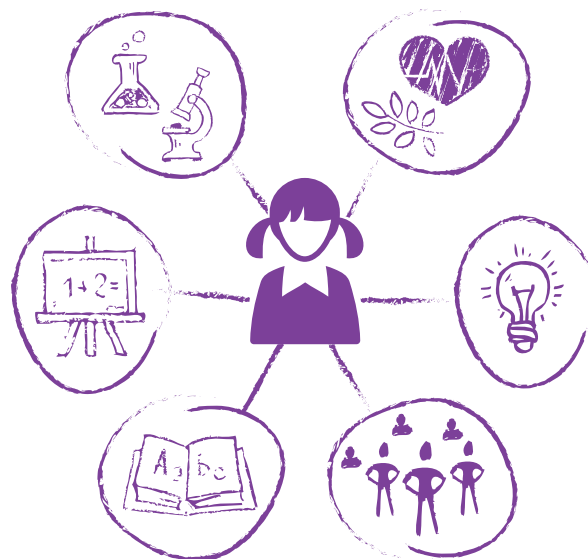
The New Mexico Kindergarten Observational Tool (KOT) is a research-based, authentic, observational tool developed specifically for New Mexico kindergarteners to support teacher planning for student instruction. By using the KOT at the beginning of the school year kindergarten teachers can not only account for what each student has already mastered, but also what areas should be focused on to build mastery. An observational tool allows the teacher to watch your child in a variety of learning and play experiences and to record your child's response to that experience. The KOT is not a test that requires the child to perform a task, but a tool to gather information in a natural, authentic way.



What is assessed on the KOT?

The KOT looks at the whole child, focusing on the areas of:

- ▶ Self, Family, and Community;
- ▶ Physical Development, Health, and Well-being;
- ▶ Approaches to Learning;
- ▶ Scientific Conceptual Understanding;
- ▶ Literacy; and
- ▶ Numeracy.



How and why did the Public Education Department design the KOT?

This tool will help achieve the vision that every child in New Mexico will have an equal opportunity for success in school based upon equitable access to an aligned and high quality early learning system that is tailored to individual strengths and challenges.

How is the KOT administered?

Teachers conduct KOT observations during the course of “normal” day to day instruction. There is no time taken away from your child's instructional day.

How will it benefit my child?

The KOT will provide information about your child to their teacher that will allow them to better understand what skills they have upon entering the classroom. Your child's teacher needs to know where their students “are” before helping them reach their destination! The KOT also allows your child to demonstrate what they know through engaging in a variety of typical kindergarten activities (rather than have to take a test).